

ALTERNATIVE MODES OF TRANSPORT

3-16 April 2005
Rustenburg
North-West Province
Republic of South Africa

Prof. MP Ranjan . Fritz Rauch . Sue Fairburn . Tasos Calantzis . Nick Collins . Jason Zawitkowski

Ask

Imagine

Resolve

Ask



Is it justifiable to reconsider a perfect device?

Why has the wheelbarrow survived as is?

What are the alternatives? Where are they now?

What is a local wheelbarrow?

Should the solution be a wheel barrow? Why? Why not?

Ask



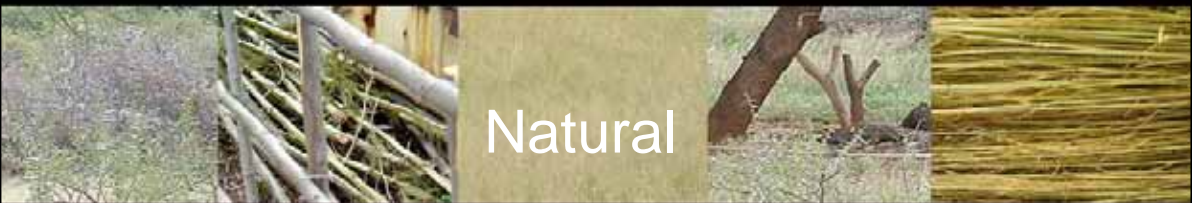
What needs to be moved? What is the environment?

Ask



For whom?

Ask



Natural



Local



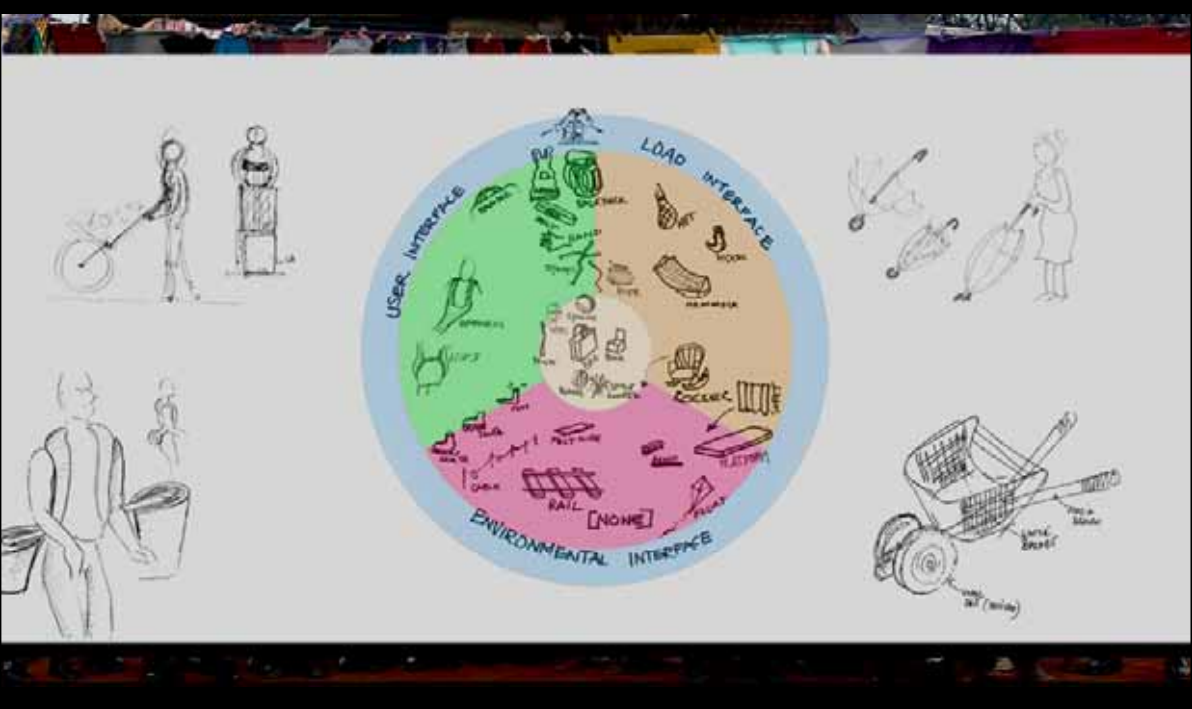
Industrial

What materials, processes & skills are available in the villages?

Ask Imagine



Ask Imagine



Ask Imagine



Ask Imagine



Ask Imagine



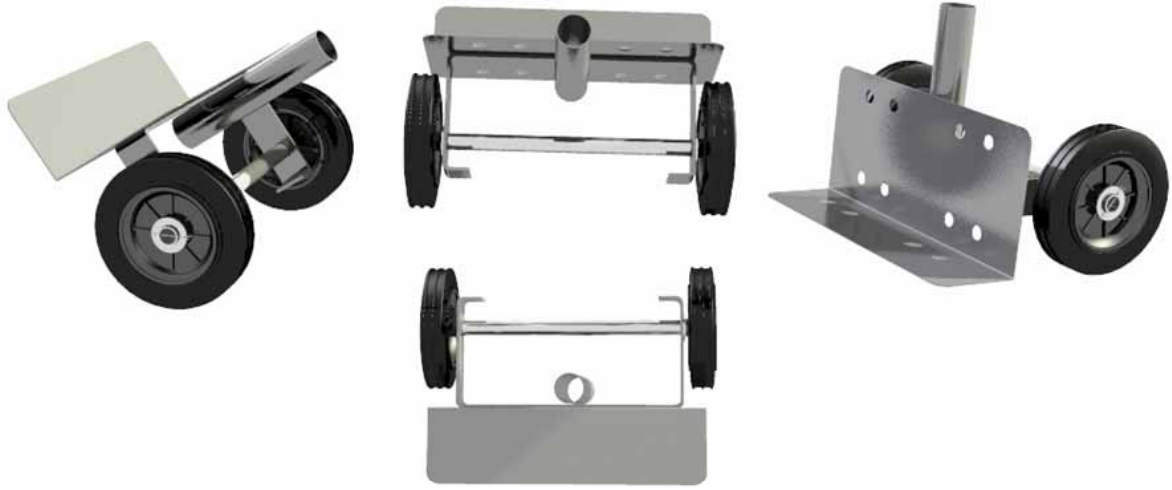
Ask Imagine Resolve



Ask

Imagine

Resolve



Ask

Imagine

Resolve



Ask

Imagine

Resolve



Ask

Imagine

Resolve



Ask

Imagine

Resolve



Ask

Imagine

Resolve



Ask

Imagine

Resolve



Ask

Imagine

Resolve



Ask

Imagine

Resolve



Ask

Imagine

Resolve



Ask

Imagine

Resolve



Ask

Imagine

Resolve



Ask

Imagine

Resolve



Ask

Imagine

Resolve

Cost Estimates

	Mock-up	Wholesale Steel base	Subsidized
Axle	15	30	30
Wheel	40	60	60
Handle	7	0	0
Mat	50	0	0
Connections	5	5	5
Labour	0	60	0
Total	117	155	95

Ask

Imagine

Resolve

Your shopping basket.



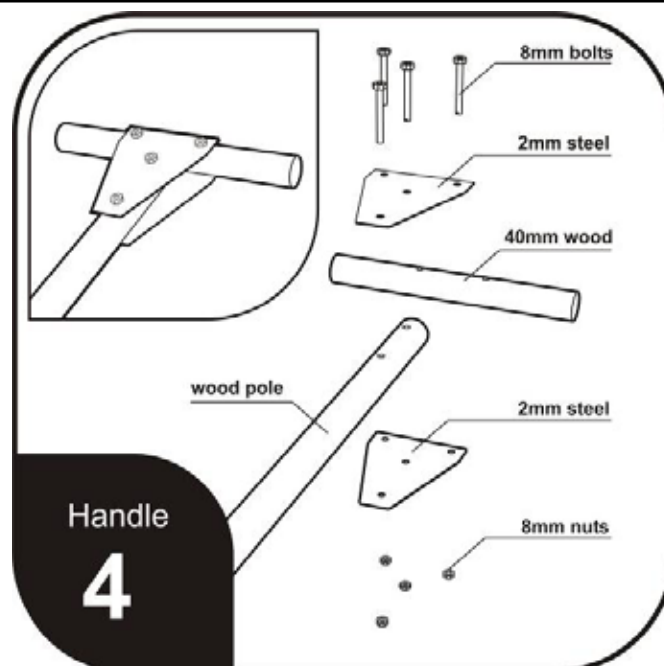
Pile it in.

Ask

Imagine

Resolve

Implement



Ask

Imagine

Resolve

Implement

