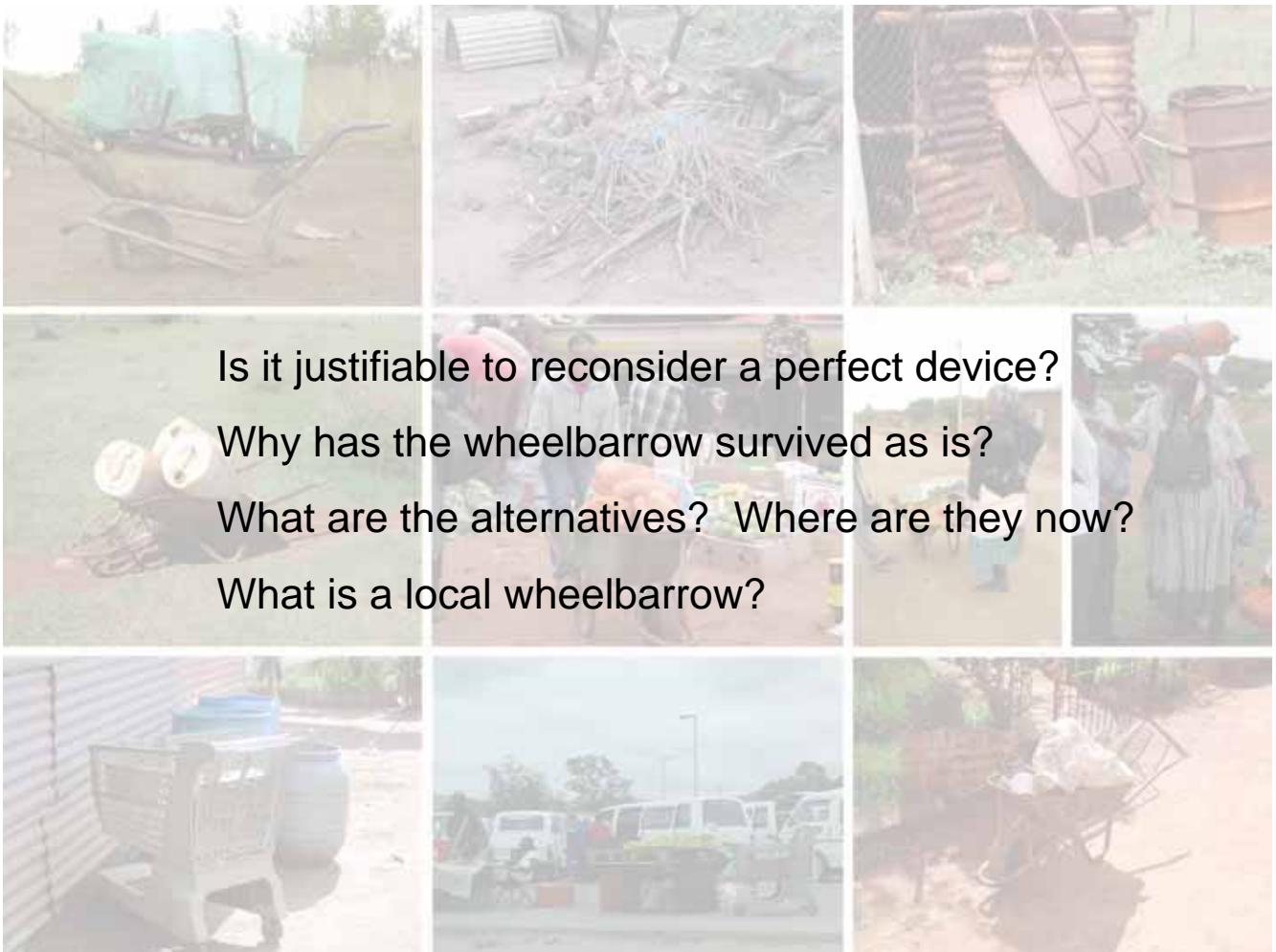




# ALTERNATIVE MODES OF TRANSPORT

3-16 April 2005  
Rustenburg  
North-West Province  
Republic of South Africa





Is this better? Why?

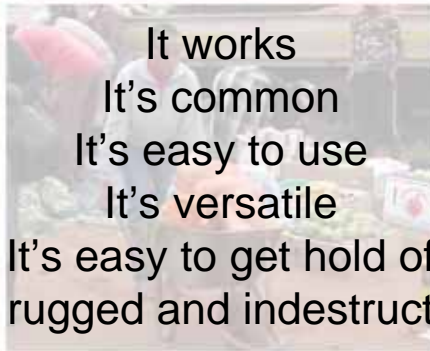


Should the solution be a wheel barrow?  
Why? Why not?





Why a wheelbarrow?



It works  
It's common  
It's easy to use  
It's versatile  
It's easy to get hold of  
It's rugged and indestructible





Why not a wheelbarrow?



High load



Awkward to handle  
Heavy  
Difficult to balance  
Needs two hands





It is useless without a wheel



There is nothing fun about it





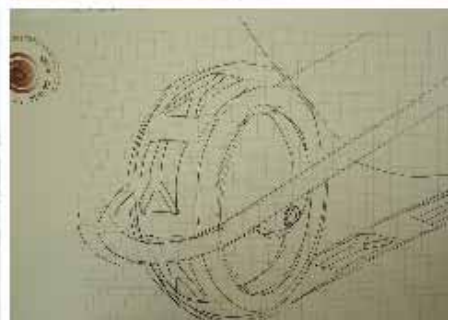
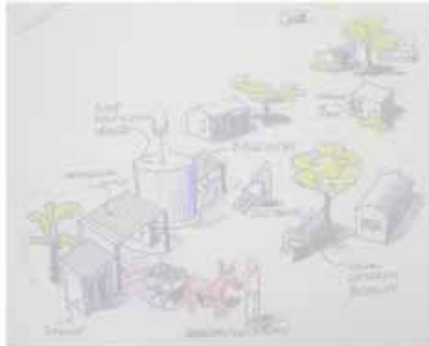
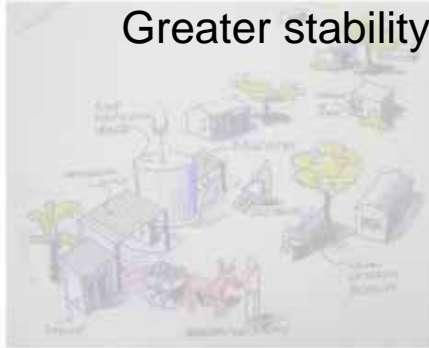
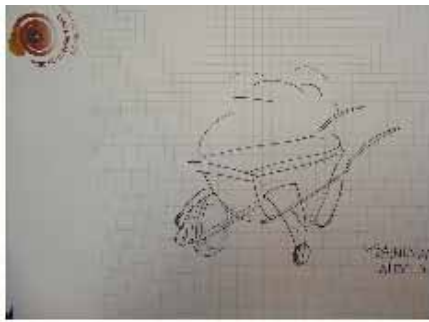
It has limited adaptability

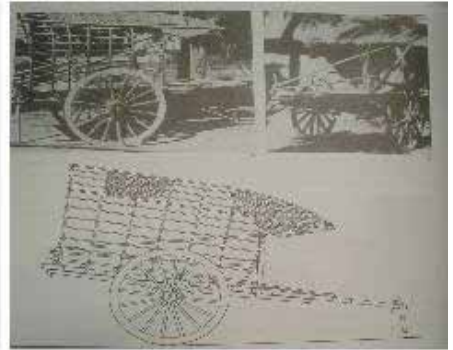
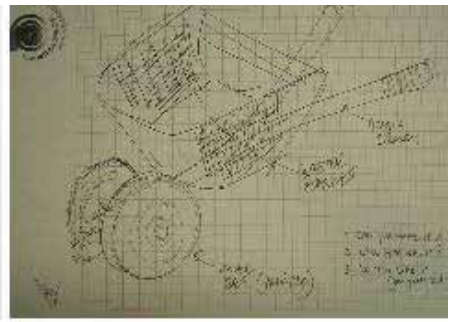


What are the opportunities?









Local resources & manufacturing

